





LDAP Multi Domain

Allow a district to set up multiple LDAP domains and maintain group cross references with these domains. Allow a district using Active Directory setup LDAP to connect to a Global Catalog.

-  Site Manager
 -  List View
 -  Detail View
-  End User
 -  SignIn Process
-  Data Layer

Users & Groups Settings

User Settings

LDAP Settings

How do I?

LDAP Domains

Manage your LDAP domains. Click a domain name to edit.

Add Domain

Test Sign In

Status	Fully Qualified Domain Name	Actions
<input type="radio"/> Active	www.schoolwires.com	<input type="button" value="Delete"/>
<input type="radio"/> Inactive	ww2.schoolwires.com	<input type="button" value="Delete"/>

When a domain is deactivated OR deleted, set the LdapSettingID to null for each user that had that LdapSettingID.

LDAP Domain List

- Display the list of domains
- Click a domain name to edit
- A button to create a new domain. Go to the edit screen when saved to continue the setup.
- A button to test the sign in
- A button to delete the domain

Add Domain

Fully Qualified Domain Name:

Continue

Cancel

When adding a new domain default port 389 and 'Active Directory' as the directory service.

Test Sign In

Enter your user name and password.

User Name:

Password:

Test Sign In

Cancel



Users & Groups Settings

User Settings | LDAP Settings | How do I?

Fully Qualified Domain Name:

corp.schoolwires.local

General | Group Cross Reference

Directory Service:

Active Directory

Port: ?

3268

User Name:

swcorp

Password:

Anonymous Bind Enabled:

Use SSL to connect to directory

Base Distinguished Name:

Retrieve Base DN

Save

Cancel

MOVE the 'Fully Qualified Domain Name' textbox to the top of the editing area. Add the 'Port' textbox to the UI. Add a callout (?) to give more information about the port field.

REMOVE the 'Use SSL to connect to directory' checkbox from the UI.

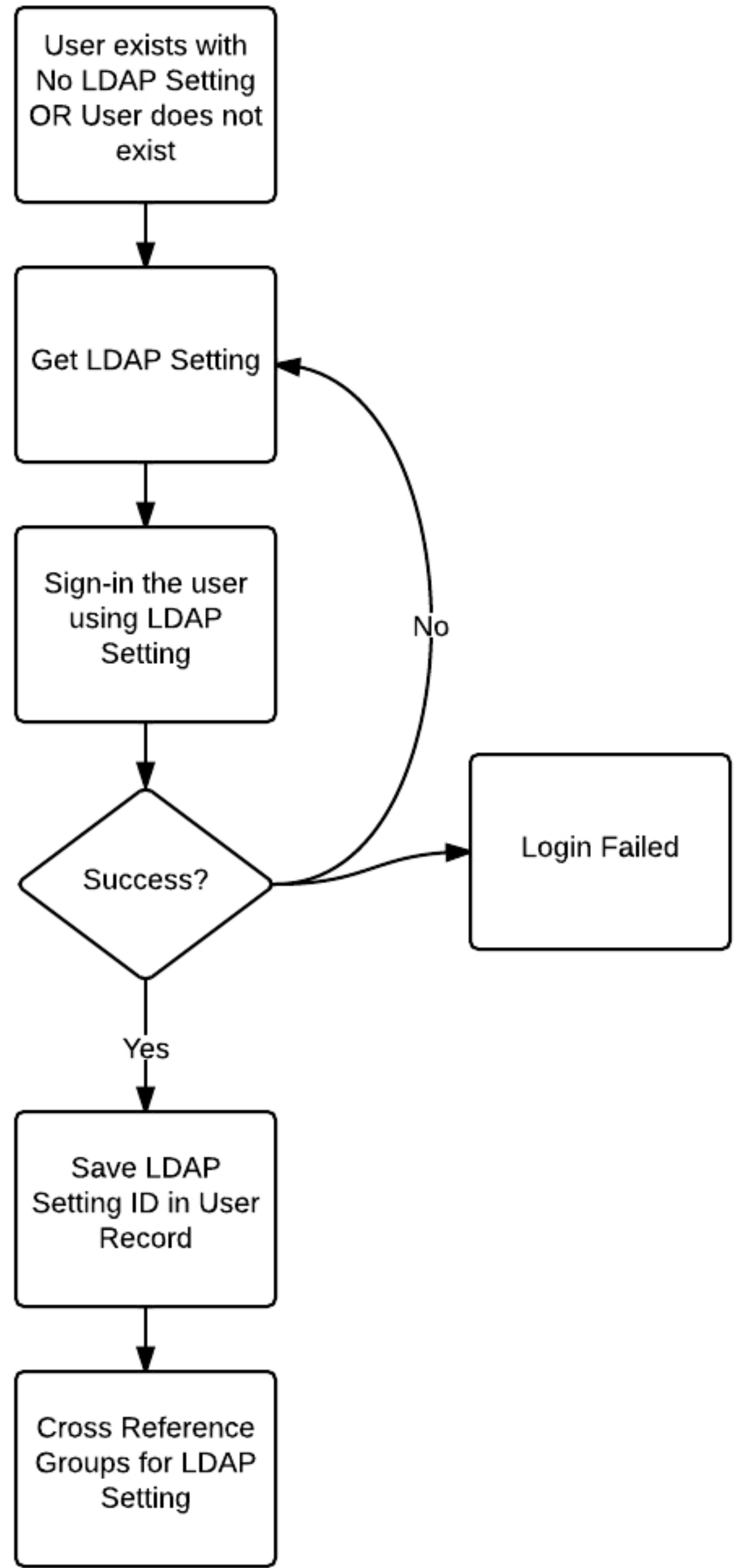
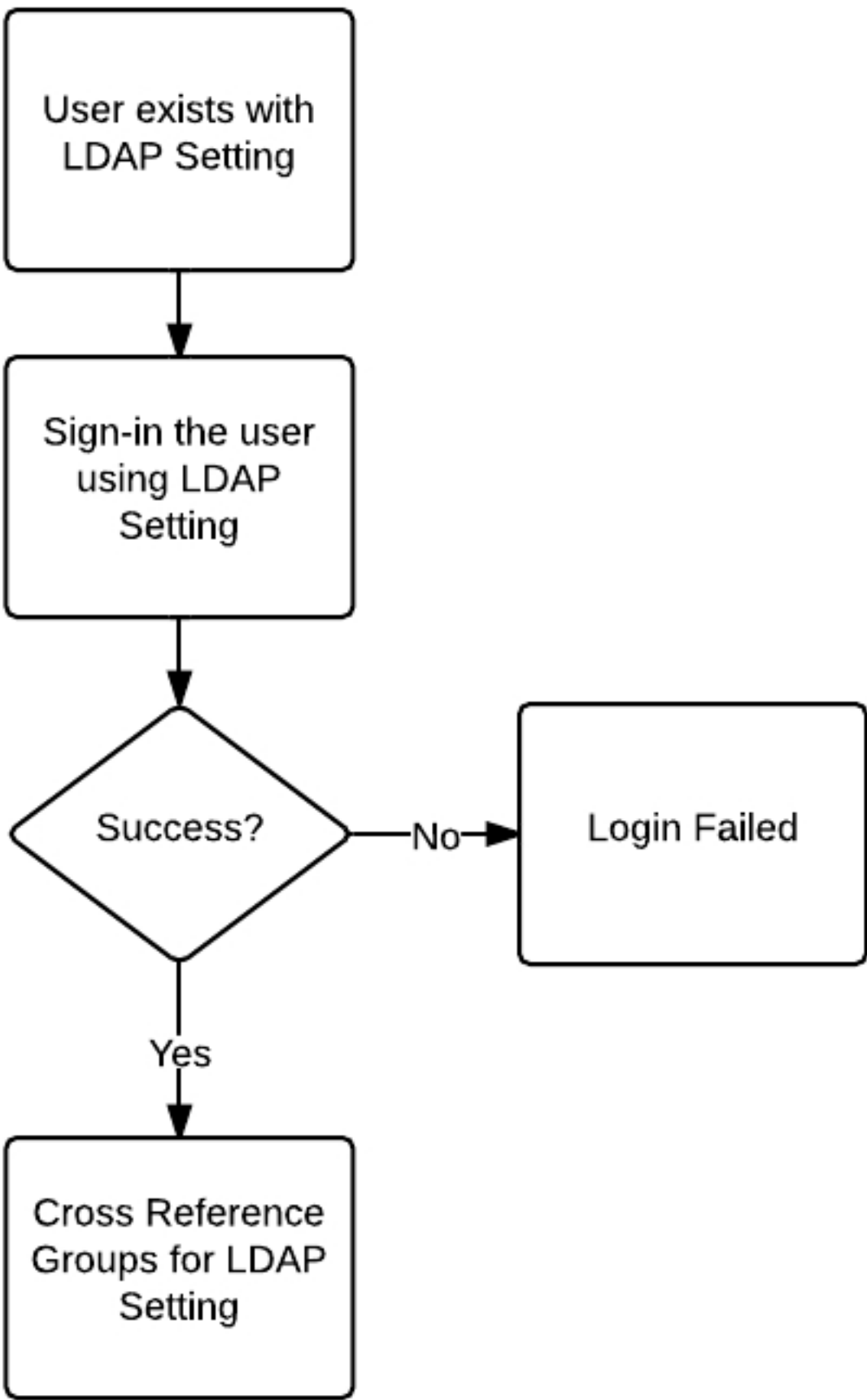
Allow the 'Base Distinguished Name' textbox to be empty.

Tasks:

1. Move the fully Qualified Domain Name to the top of the editing area.
2. Add a textbox for the 'Port Number' to the UI.
3. Add a callout question mark next to the Port. On mouse over display:
 - 389 - LDAP
 - 636 - LDAP SSL
 - 3268 - LDAP Global Catalog
 - 3269 - LDAP SSL Global Catalog
4. Remove the 'Use SSL to connect to directory' checkbox from the UI. The field in the database will stay.
5. Move the 'Test Sign In Button' to the list view.
6. Allow the 'Base Distinguished Name' textbox to be empty.

Notes:

The Group Cross Reference tab can remain the same. In order to log into the global catalog a different port number must be used and the base distinguished name needs to be blank. The ports for the global catalog are 3268 and 3269 for SSL.



Sign In
User Name:

Password:

LDAPSetting *Modify			
Column Name	Data Type	Allow Nulls	Notes
LDAPSettingID	int	<input type="checkbox"/>	Primary Key
PortNumber	int	<input type="checkbox"/>	The port to use for the connection
Active	bit	<input type="checkbox"/>	Default true

LDAPGroupCrossRef *Modify			
Column Name	Data Type	Allow Nulls	Notes
LDAPSettingID	int	<input type="checkbox"/>	Foreign Key

User *Modify			
Column Name	Data Type	Allow Nulls	Notes
LDAPSettingID	int	<input checked="" type="checkbox"/>	Foreign Key

LDAPSetting Table:

- Add a column called LDAPSettingID. Make it the primary key and remove the primary key from the AccountID field. Set up the primary key to auto increment.
- Add a column called PortNumber.

LDAPGroupCrossRef Table:

- Add a column called LDAPSettingID.

User Table:

- Add a column called LDAPSettingID. This will associate a LDAP setting to a user.

Unlock User Process:

- When a user is unlocked clear the LDAPSettingID value in the User Table. This will allow the reset of a user if they are moved to another domain. Fringe case.

Deployment Script:

- A script will need developed to relate the LDAPGroupCrossRef table with the LDAPSetting table.
- A script will need developed to initialize the port number. If SSLEnabled is true then save 636 to the PortNumber field. If SSLEnabled is false then save 389 to the PortNumber field.
- A script to set Active to true in the LDAPSetting table.
- A script to save the LDAPSettingID for each user.